

Manual Virtual Desktop

Download and installation

1. Surf to <http://receiver.citrix.com/> and click download.



Citrix Receiver

Access your apps, data and desktops from any device.

Download Receiver for Windows

Find Citrix Receiver for other platforms

Download previous versions of Receiver

2. Click accept and continue. Download the installation file.

Citrix License Agreement

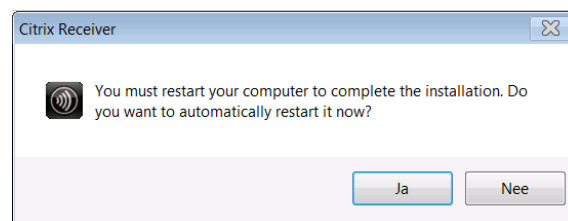
Use of this Citrix Receiver software is subject to the Citrix license covering the specific edition of the Citrix product with which you will be using this software. Your use of Citrix Receiver is limited to use on the devices for which it was created for connection to the Citrix product(s). If your device is connected to the Internet, Citrix Receiver may, without additional notice, check for Citrix Receiver updates that are available for download and installation to your device and let you know of their availability. Only non-personally identifiable information is transmitted when this happens, except to the extent that IP addresses may be considered personally identifiable in some jurisdictions. The use of such information, including your IP address, is governed by the Citrix Privacy Policy available on www.citrix.com. Updates will not be downloaded or installed without your consent.

Certain third-party software may be provided with this software that is subject to separate license conditions. The licenses are located in the third-party licenses file accompanying this component or in the corresponding license files available at www.citrix.com.

I agree to the terms of the Citrix License Agreement

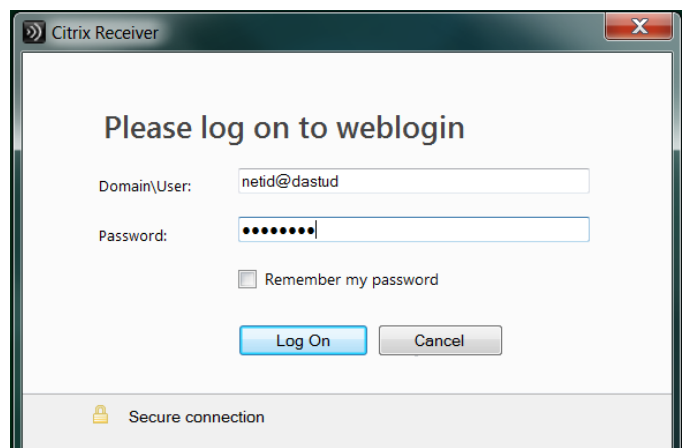
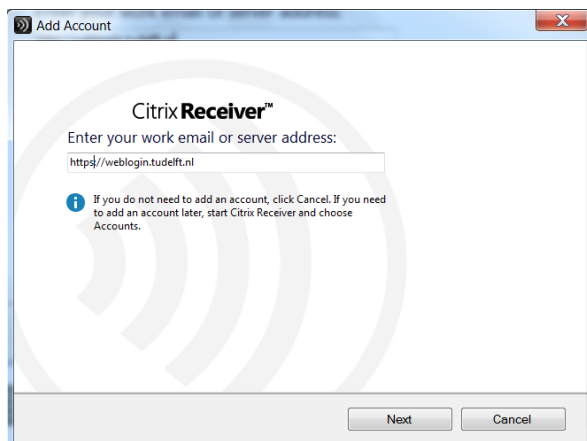
Continue

3. Go through the installation procedure and restart your PC.



Configuration

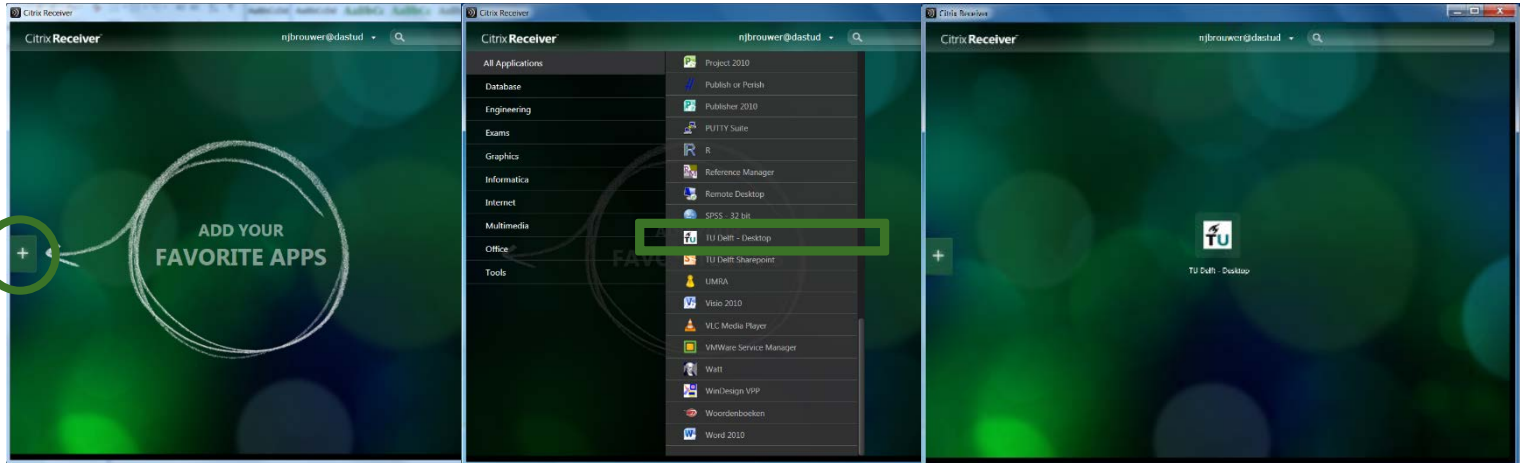
1. Open the Citrix Receiver, you will get the screen below. Fill in the following address: <https://weblogin.tudelft.nl>
2. Click 'Next' and you will get the screen below. Use: 'yournetid@dastud' for the field domain\user and your personal password.



For questions and remarks concerning virtual software, please contact Jochem@oras.nl

2014-01-15

- The following screen is the main screen of the Citrix Receiver. Here you can add your favorite apps. The 'TU Delft Desktop' can be found in the 'All Applications' directory.



- Click the application you want to start and the virtual desktop application is ready for use!

